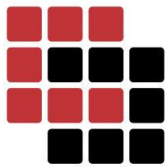




shutterstock

SUVA**A**STU SERENE



SUVA**A**STU PROJECTS PVT LTD.

Lets make a new beginning...

Suvastu Serene is a 2-block apartment complex spread across 1 acre close to Bangalore's Electronic City. Each block houses a combination of aesthetically designed, functional 2 and 3 bedroom apartments. Buying a home is a once-in-a-lifetime decision. Each apartment at Suvastu Serene is carefully crafted using high quality materials and superior construction standards. We pay great attention to every small detail to ensure your home is everything you want it to be - durable, comfortable and beautiful.





AMENITIES & FACILITIES:

- Club House ● Swimming Pool ● Gym ● Departmental Store ● Indoor Games - Table Tennis, Carom, Snooker
- Childrens Play Area ● Jogging Track ● Rain Water Harvesting ● Solid Waste Management ● Water Recycling
- Uninterrupted Water & Electricity Supply ● 24 Hours Security



Jogging Track



Childrens Play Area



Gym



Swimming Pool





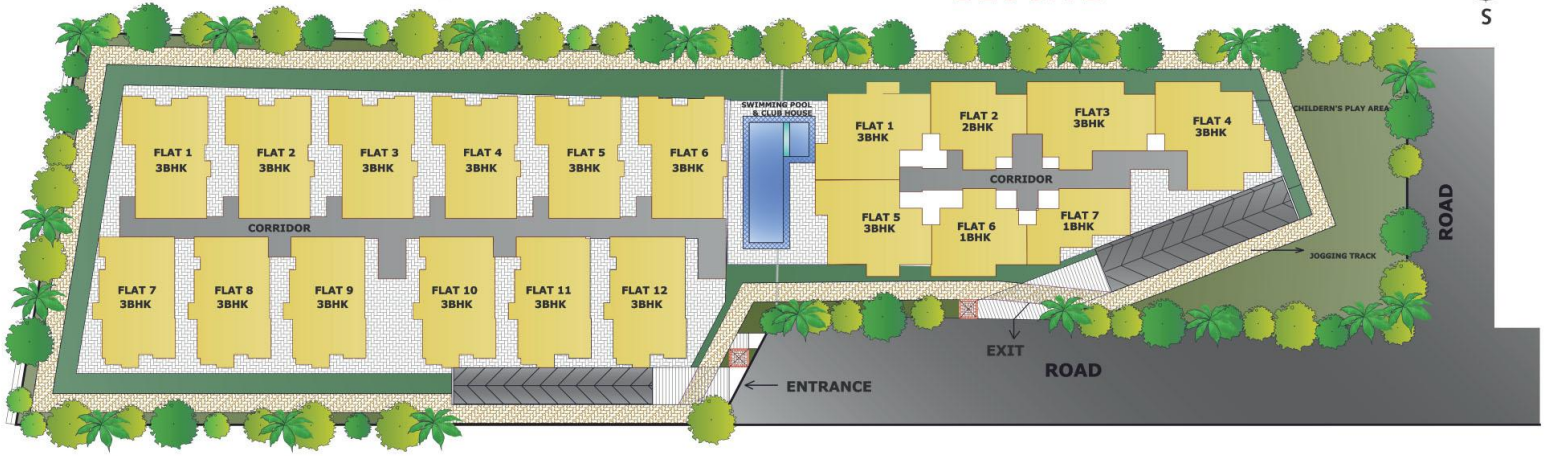
Night view



Swimming Pool - Club House

BLOCK A

BLOCK B



BLOCK A - FLAT No. 1 to 6

BLOCK A - FLAT No. 7 to 12



3 BHK Floor Plan - 1145 sqft.



3 BHK Floor Plan - 1150 sqft.

SPECIFICATION:

Structure	Seismic II compliant RCC framed structure using ready mix concrete
Walls	6" concrete block masonry for external walls 4" concrete block masonry for internal walls
Doors	Main Door: Sal wood frame with HDF shutters - prefab engineered panel door, lock, handle, brass hinges, tower Bolt and stopper Other Doors: Sal wood frame and flush door shutters with powder coated fittings
Windows	Aluminium Windows with MS grill protection
Flooring	Quality vitrified tiles - Drawing room dining, bedrooms & kitchen, anti-skid ceramic tiles for balcony
Kitchen	20 mm thick polished granite counter top platform with stainless steel sink and 2" ceramic dadoing above the granite counter top. Provision for Aqua guard point and washing machine in utility area.
Toilets	Ceramic glazed tiles, dado upto 7'-0" ht. EWC with flush tank (Cera / Hindware or equivalent). One hot & cold mixture unit for shower & all other fittings of make Jaguar / Ess Ess/Marc in toilets. Provision for geyser & exhaust fan.
Painting	OBD paint for internal walls - roller finish. Cement paint for external walls over plastered surface.
Electrical	One TV / Telephone point in the living and master bed room. Provision for 1 split AC in master bedroom. Elegant modular electrical switch of Anchor / M.K. / or equivalent make. ISI mark PVC conduits concealed in the walls, quality copper cables.
Water Supply	Bore well water, pump, sump, overhead tank provided with concealed pipeline.
Lift	6 passenger lift of reputed make with generator backup.
Intercom	One extension to each flat.

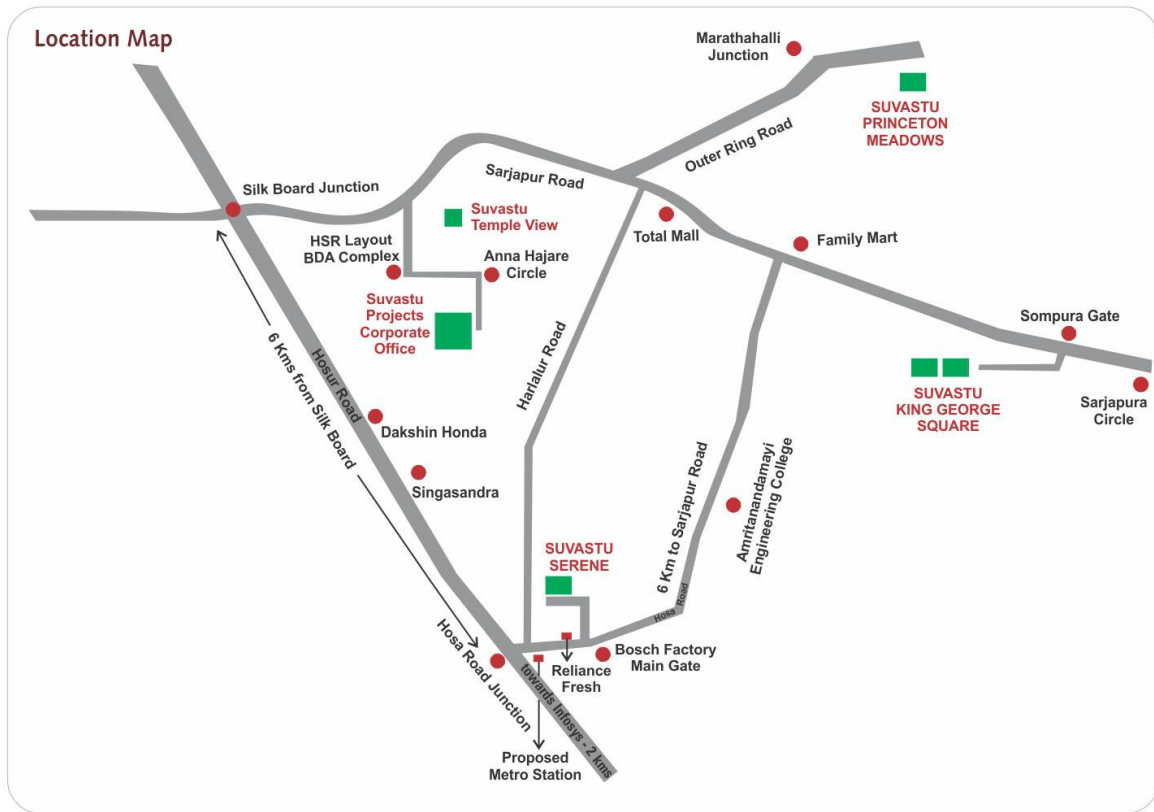


Completed Project



Ongoing Project

Proposed Project - Suvastu King George Square- Sarjapura
Suvastu Evergreen - Hoskote



SUVASTU PROJECTS PVT LTD.

Corporate Office: # 49, AMR Plaza, 18th Main, 3rd Sector,
HSR Layout, Bangalore-560 102.

Ph: 080-25722991 Mobile: XXXXX XXXXX / XXXXX XXXXX

Website: www.suvastuprojects.com